

Report No. : **1100516-01-02**
Client : **SJC Co., Ltd**
115-8, Wolmun-ri, Wabu-eup, Namyangju-si, Gyeonggi-do,
Korea

The following merchandise was submitted and identified by the client :

Commodity : **SJ-2682VB**
Received date : **May. 16. 2011**
Test Performing date : **May. 17. 2011 ~ May. 24. 2011**
Issued date : **June. 3. 2011**
Test Performed : KQTI tested the samples selected by applicant following results
Test Results : For further details, Please Refer to following pages

B. Y. Lee

Testing Person



J. K. Kwon

Lab Manager



1010, Human Sky Valley, 959 Goseac-Dong, Kwonsun-Gu, Suwon-Si, Gyeonggi-Do, KOREA

TEL:031)227-4280, FAX:031)227-4291, E-mail:kqti@kqti.co.kr, Home:www.kqti.co.kr

This test report is issued by company subject to its General conditions of service printed overleaf. Attention is drawn to the limitations of liability, indemnification and jurisdictional issues defined therein. The results shown in this test report refer only to the samples tested unless otherwise stated. This Test report cannot be reproduced except in full without prior written permission of the company

Report No. : **1100516-01-02**
 Sample No. : **2**
 Sample Description : **SJ-2682VB**

Heavy Metals

Test items	Unit	Test Method	MDL	Results
Cadmium(Cd)	mg/kg	EPA 6010B:1996 ICP	0.5	N.D
Lead (Pb)	mg/kg	EPA 6010B:1996 ICP	2	N.D
Mercury(Hg)	mg/kg	EPA 6010B:1996 ICP	1	N.D
Hexavalent Chromium(CrVI)	mg/kg	EPA 3060A:1996 UV/VIS	0.5	N.D

Flame Retardants-PBBs/PBDEs

Test items	Unit	Test Method	MDL	Results
PBBs (Polybrominated Biphenyls)				
Monobromobiphenyl	mg/kg	EPA 3540C:1996, GC/MS	1	N.D
Dibromobiphenyl	mg/kg	EPA 3540C:1996, GC/MS	1	N.D
Tribromobiphenyl	mg/kg	EPA 3540C:1996, GC/MS	1	N.D
Tetrabromobiphenyl	mg/kg	EPA 3540C:1996, GC/MS	1	N.D
Pentabromobiphenyl	mg/kg	EPA 3540C:1996, GC/MS	1	N.D
Hexabromobiphenyl	mg/kg	EPA 3540C:1996, GC/MS	1	N.D
Heptabromobiphenyl	mg/kg	EPA 3540C:1996, GC/MS	1	N.D
Octabromobiphenyl	mg/kg	EPA 3540C:1996, GC/MS	1	N.D
Nonabromobiphenyl	mg/kg	EPA 3540C:1996, GC/MS	1	N.D
Decabromobiphenyl	mg/kg	EPA 3540C:1996, GC/MS	1	N.D
PBDEs (Polybrominated Diphenyl Ethers)				
Monobromodiphenyl ether	mg/kg	EPA 3540C:1996, GC/MS	1	N.D
Dibromodiphenyl ether	mg/kg	EPA 3540C:1996, GC/MS	1	N.D
Tribromodiphenyl ether	mg/kg	EPA 3540C:1996, GC/MS	1	N.D
Terabromodiphenyl ether	mg/kg	EPA 3540C:1996, GC/MS	1	N.D
Pentabromodiphenyl ether	mg/kg	EPA 3540C:1996, GC/MS	1	N.D
Hexabromodiphenyl ether	mg/kg	EPA 3540C:1996, GC/MS	1	N.D
Heptabromodiphenyl ether	mg/kg	EPA 3540C:1996, GC/MS	1	N.D
Octabromodiphenyl ether	mg/kg	EPA 3540C:1996, GC/MS	1	N.D
Nonabromodiphenyl ether	mg/kg	EPA 3540C:1996, GC/MS	1	N.D
Decabromodiphenyl ether	mg/kg	EPA 3540C:1996, GC/MS	1	N.D

NOTE : 1) N.D=Not Detected (<MDL)

2) MDL=Method Detection Limit

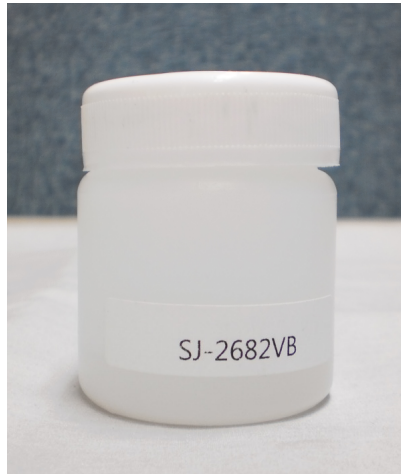
1010, Human Sky Valley, 959 Goseac-Dong, Kwonsun-Gu, Suwon-Si, Gyeonggi-Do, KOREA

TEL:031)227-4280 FAX:031)227-4291, E-mail:kqti@kqti.co.kr, Home:www.kqti.co.kr

This test report is issued by company subject to its General conditions of service printed overleaf. Attention is drawn to the limitations of liability, indemnification and jurisdictional issues defined therein. The results shown in this test report refer only to the samples tested unless otherwise stated. This Test report cannot be reproduced except in full without prior written permission of the company

Report No. : **1100516-01-02**

Picture of sample as Received : SJ-2682VB



*****End*****

1010, Human Sky Valley, 959 Goseac-Dong, Kwonsun-Gu, Suwon-Si, Gyeonggi-Do, KOREA

TEL:031)227-4280, FAX:031)227-4291, E-mail:kqti@kqti.co.kr, Home:www.kqti.co.kr

This test report is issued by company subject to its General conditions of service printed overleaf. Attention is drawn to the limitations of liability, indemnification and jurisdictional issues defined therein. The results shown in this test report refer only to the samples tested unless otherwise stated. This Test report cannot be reproduced except in full without prior written permission of the company